

DOCUMENTATION

Vendor Performance & Announcement May 2022

Mr. Erik Thues, Strategic Purchasing

Mr. Dirk Vanreusel, Supplier Quality Assurance

Mr. Leonardo Lemos, Supply Chain Management

CLIP/PPM Performance

May 2022

Total component vendors May CLIP (15)

CLIP RANKING

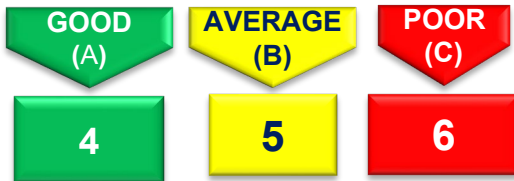
- 0%-98% → C
- 98%-99% → B
- 99%-100% → A

TOP 4 CLIP VENDORS	BOTTOM 4 CLIP VENDORS
83327	101588
102866	81419
100877	101237
82565	81485

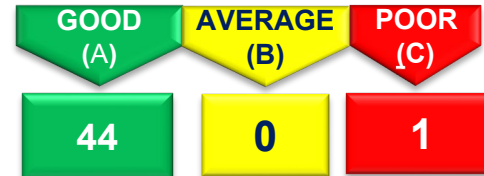
Quality ranking: Average last 3 months

Supplier	PPM	Percentage	PPM Class
101237	6.346	100%	C

OVERALL CLIP PERFORMANCE

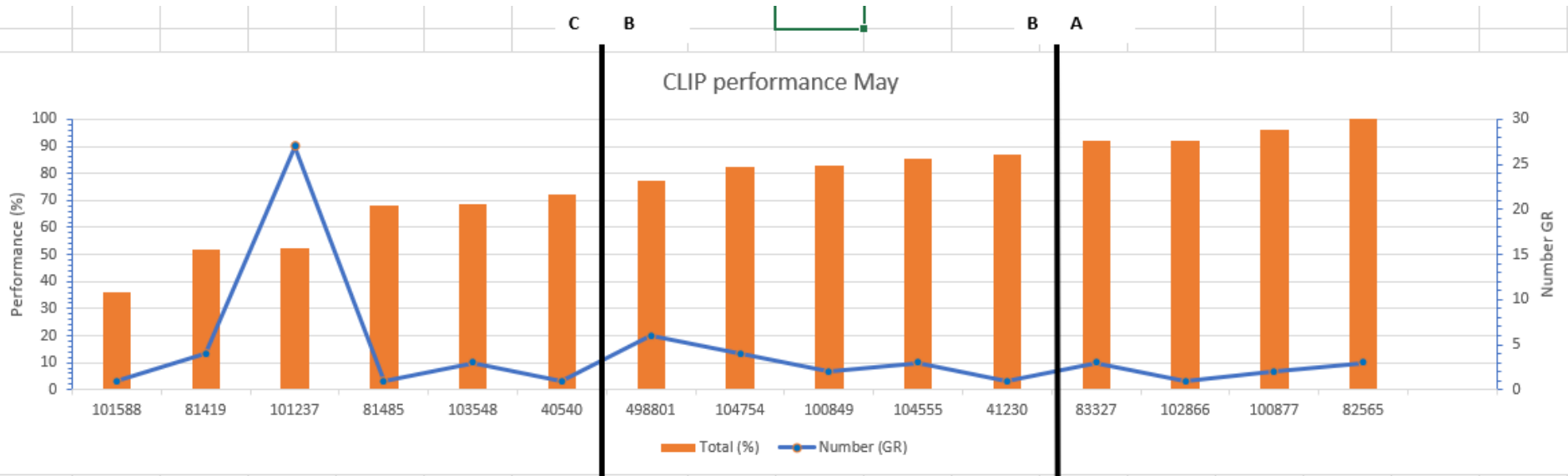


OVERALL QUALITY PERFORMANCE



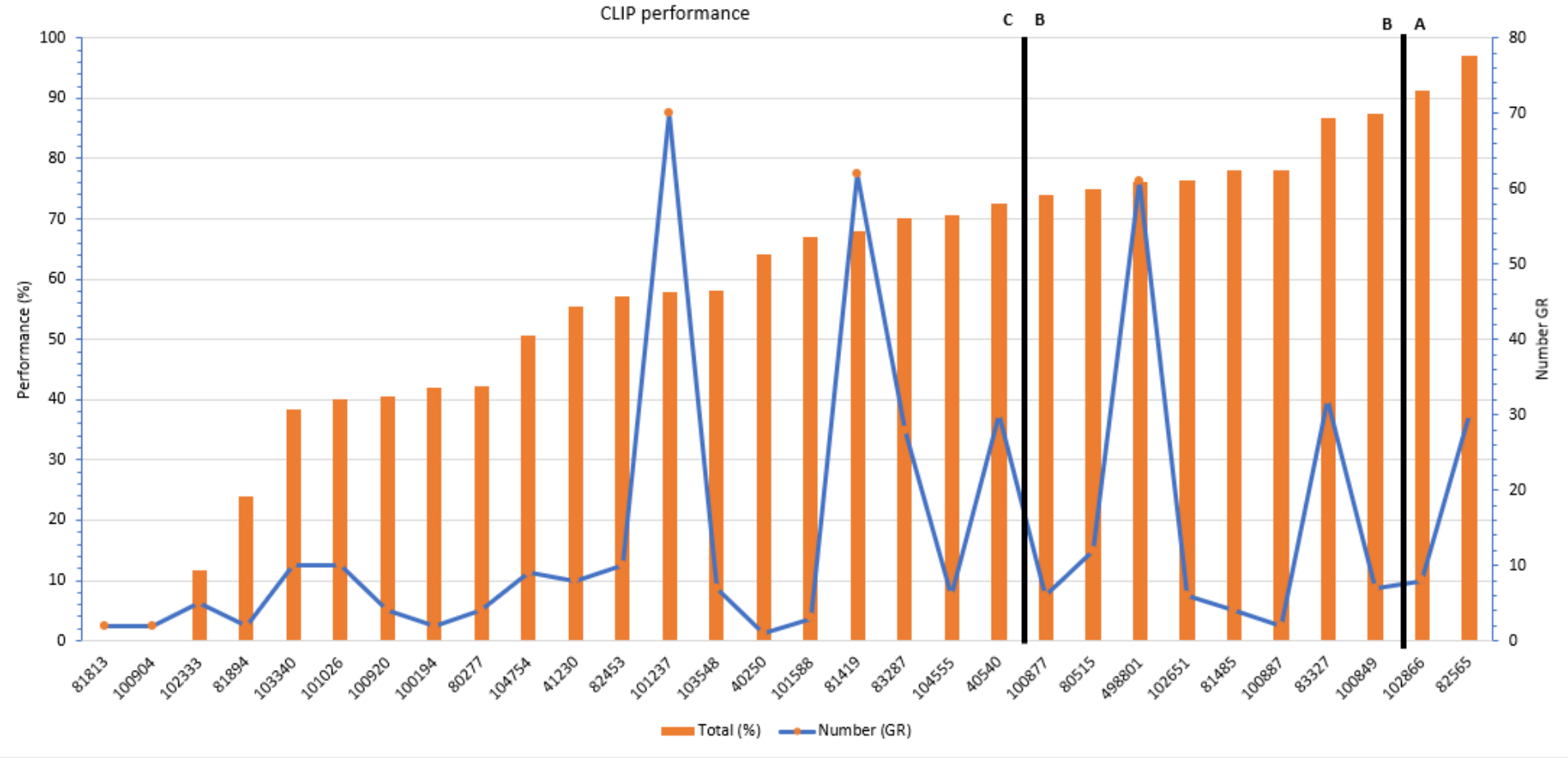
Logistical Clip Measurement

March 2022

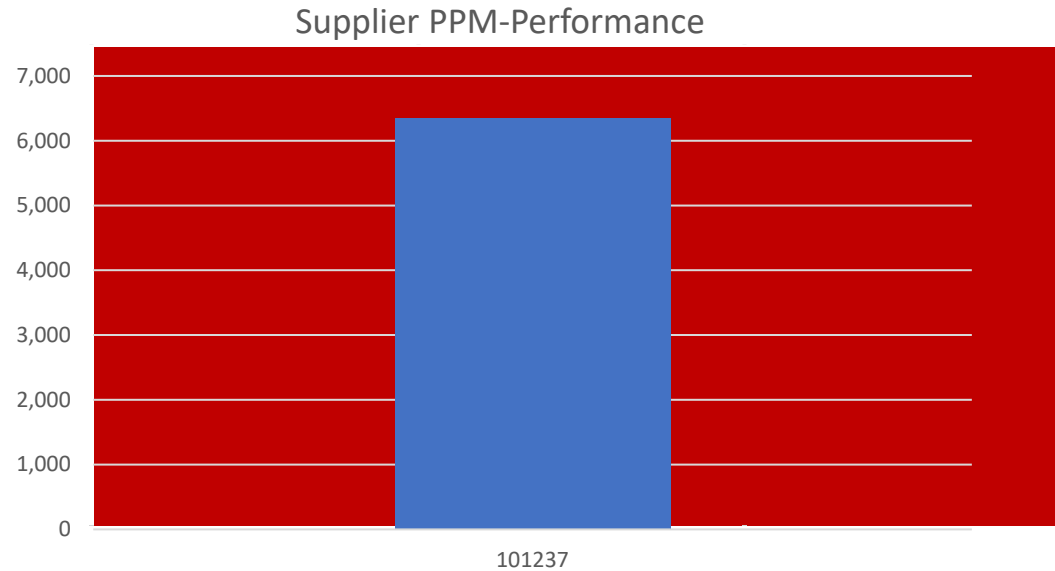


Logistical Clip Measurement

2022 cumulative total



Supplier PPM last 3 months (Mar/Apr/May)



Definition PPM

PPM (Parts per million) is a measurement used by Punch Powertrain to measure quality performance.

Definition: One PPM means one defect on a million pcs or 1/1.000.000

The Punch Powertrain rate for most automotive suppliers is targeted at 25 PPM or 0,0025%.

To calculate: For example, let's say you had 25 pieces defective in a shipment of 1.000 pieces.
 $25/1000 = 0,025$ or 2,5% defective ; $0,025 \times 1.000.000 = 25.000$ PPM.

2021 PPM target ≤ 25 PPM (or contractually agreed otherwise).

Complaints are documented on delivery date of the parts.
PPM's are calculated as average of the last 3 months

Punch Powertrain

