

DOCUMENTATION

Vendor Performance & Announcement November 2020

Mr. Erik Thues, Strategic Purchasing

Mr. Dirk Vanreusel, Supplier Quality Assurance

Mr. Ted Witteveen, Supply Chain Management



CLIP/PPM Performance

November 2020

Total component vendors
CLIP (for production)
35

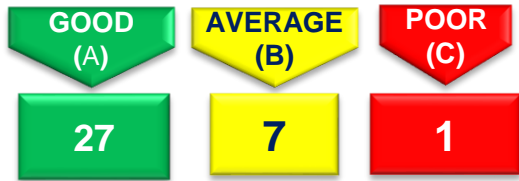
CLIP RANKING
 - 0%-98% → C
 - 98%-99% → B
 - 99%-100% → A

TOP 4 CLIP VENDORS	BOTTOM 4 CLIP VENDORS
83327	101237
104754	102195
80652	81813
41230	80277

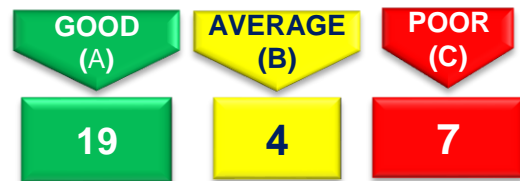
Quality ranking: Average last 3 months

Supplier	PPM	Percentage	PPM Class
100861	72,201	79.7%	C
82453	10,493	11.6%	C
83327	5,433	6.0%	C
101237	872	1.0%	C
80277	499	0.6%	C
81419	312	0.3%	C
82582	303	0.3%	C
2200	149	0.2%	B
81802	134	0.1%	B
82134	104	0.1%	B
82426	35	0.0%	B
83287	14	0.0%	A
40540	2	0.0%	A

OVERALL CLIP PERFORMANCE

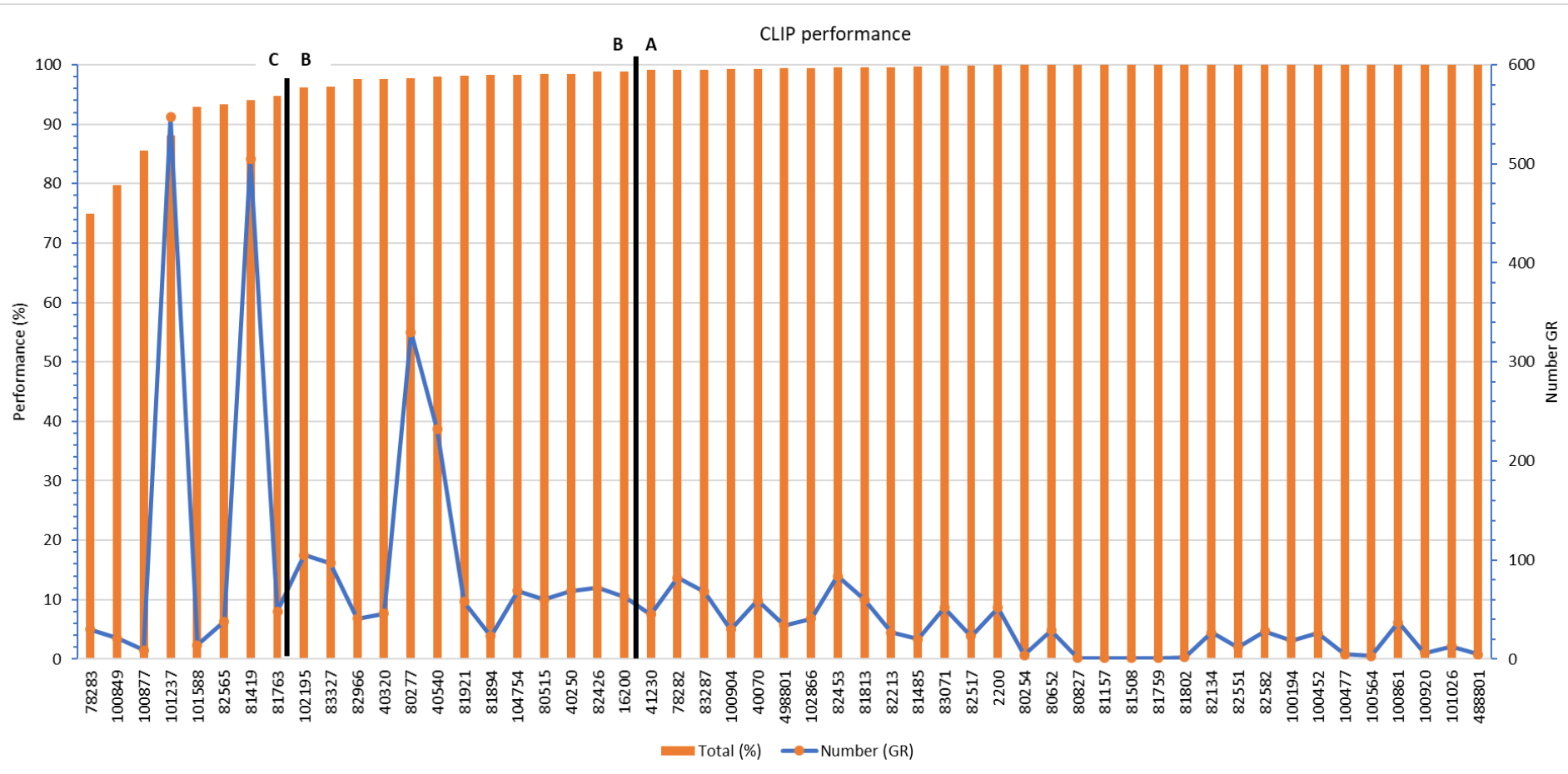


OVERALL QUALITY PERFORMANCE



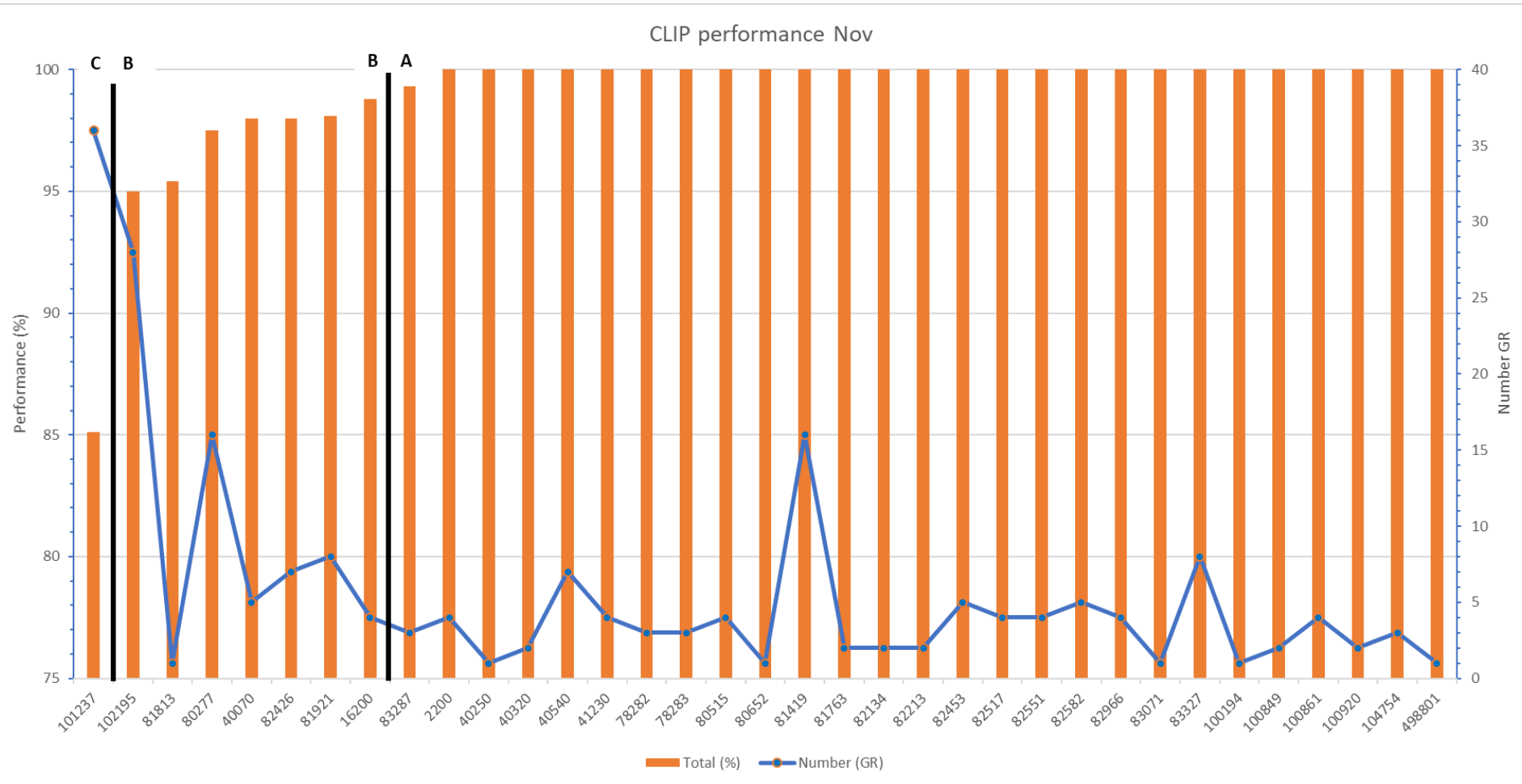
Logistical Clip Measurement

2020 cumulative total

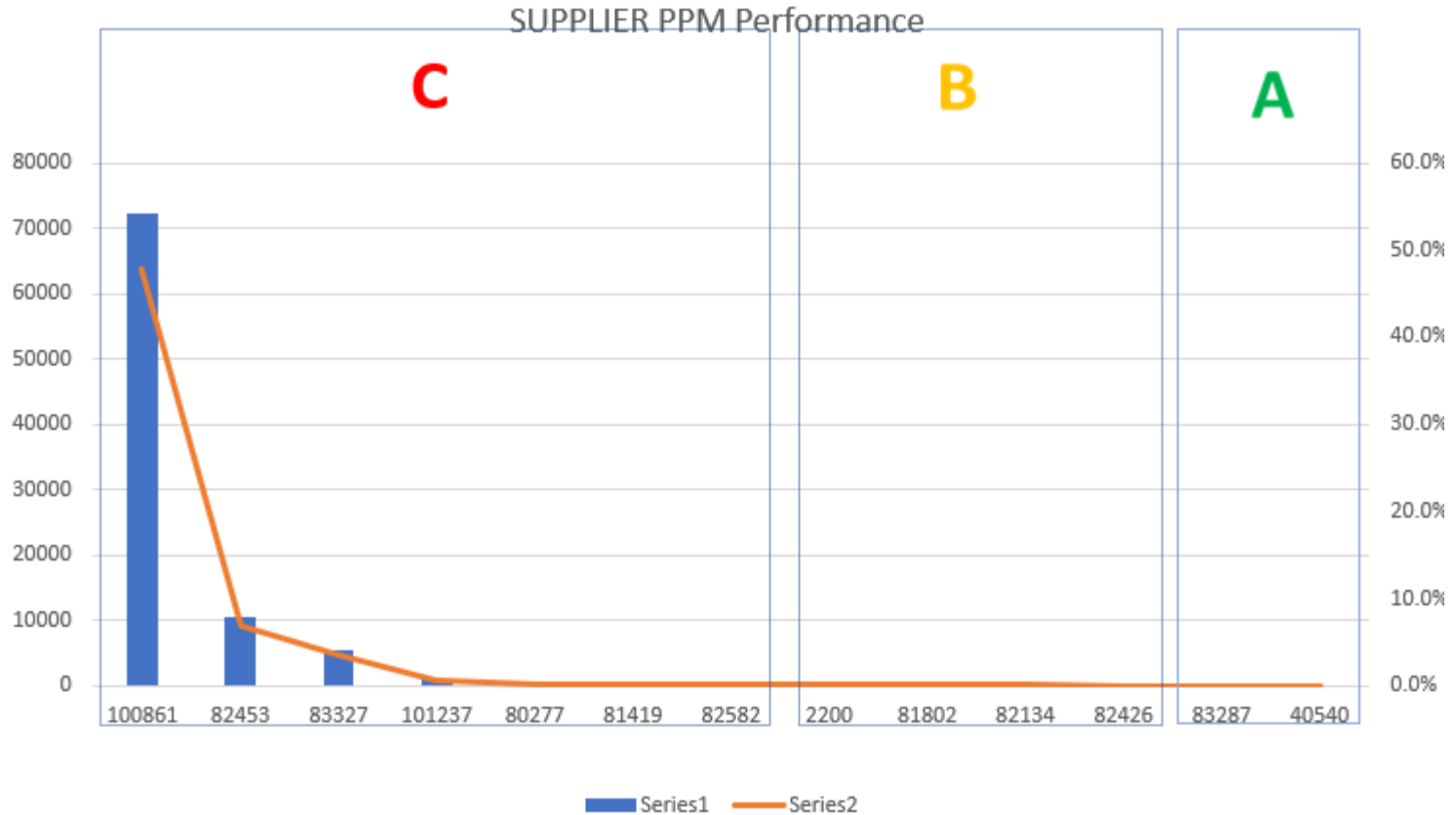


Logistical Clip Measurement

November 2020



Supplier PPM Sept/Oct/Nov 2020



Announcement Red Vendors

Vendor 100861: Rust, packaging damage.

Vendor 82453: High porosities.

Vendor 83327: Rust related issue.

For these Red Vendors the Punch Powertrain purchasing dept will start up a 'Supplier Improvement Programm'

Definition PPM

PPM (Parts per million) is a measurement used by Punch Powertrain to measure quality performance.

Definition: One PPM means one defect on a million pcs or 1/1.000.000

The Punch Powertrain rate for most automotive suppliers is targeted at 25 PPM or 0,0025%.

To calculate: For example, let's say you had 25 pieces defective in a shipment of 1.000 pieces.
 $25/1000 = 0,025$ or 2,5% defective ; $0,025 \times 1.000.000 = 25.000$ PPM.

2020 PPM target ≤ 25 PPM (or contractually agreed otherwise).

Complaints are documented on delivery date of the parts. In the past it was on the issue date (New since the beginning 2020, changed method of calculation).

PPM's are calculated as average of the last 3 months

Punch Powertrain

