

DOCUMENTATION

Vendor Performance & Announcement Februari 2022

Mr. Erik Thues, Strategic Purchasing

Mr. Dirk Vanreusel, Supplier Quality Assurance

Mr. Leonardo Lemos, Supply Chain Management

CLIP/PPM Performance

Februari 2022

Total component vendors
CLIP (for production)

21

CLIP RANKING

- 0%-98% → C
- 98%-99% → B
- 99%-100% → A

TOP 4 CLIP VENDORS

BOTTOM 4 CLIP VENDORS

100877

41230

82453

81813

82565

81894

102651

102333

OVERALL CLIP PERFORMANCE

GOOD (A)

AVERAGE (B)

POOR (C)

5

7

9

Quality ranking: Average last 3 months

Supplier	PPM	Percentage	PPM Class

OVERALL QUALITY PERFORMANCE

GOOD (A)

AVERAGE (B)

POOR (C)

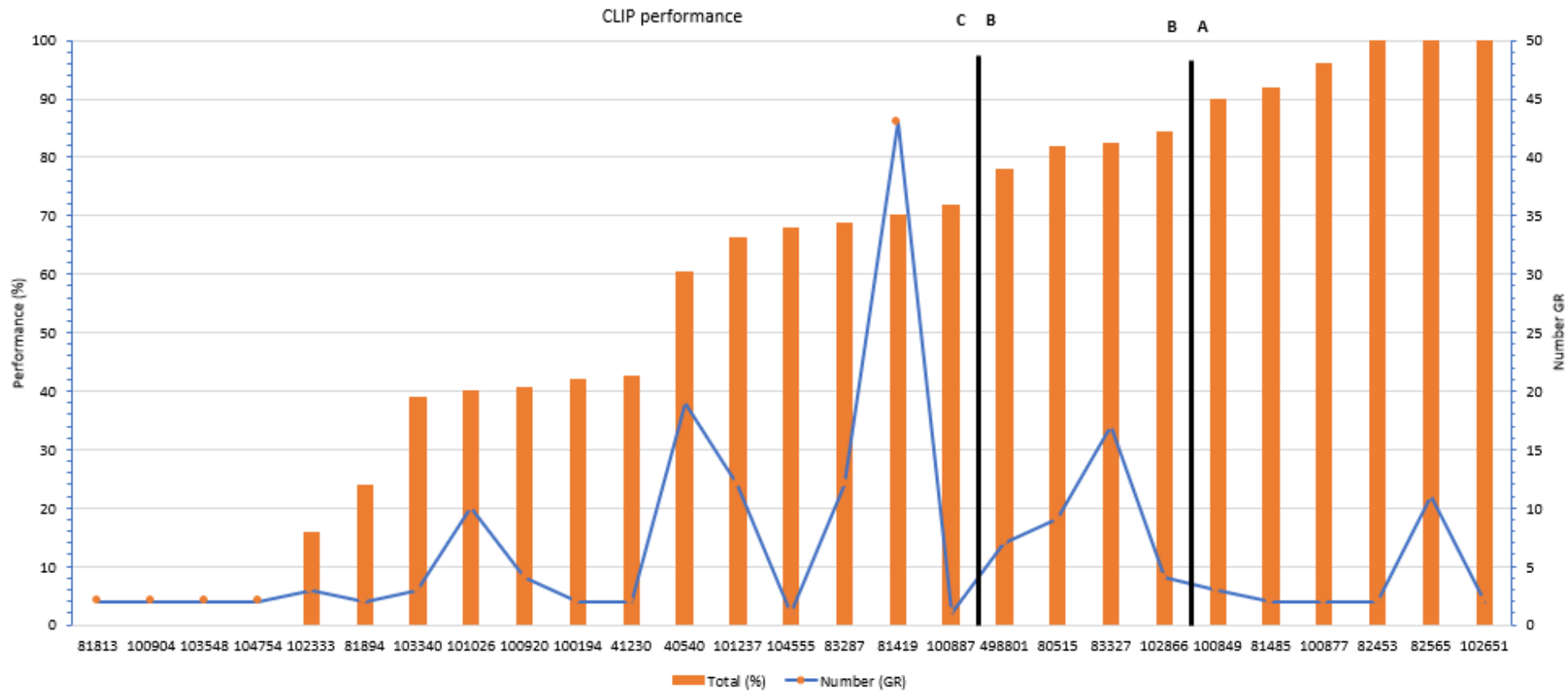
45

0

0

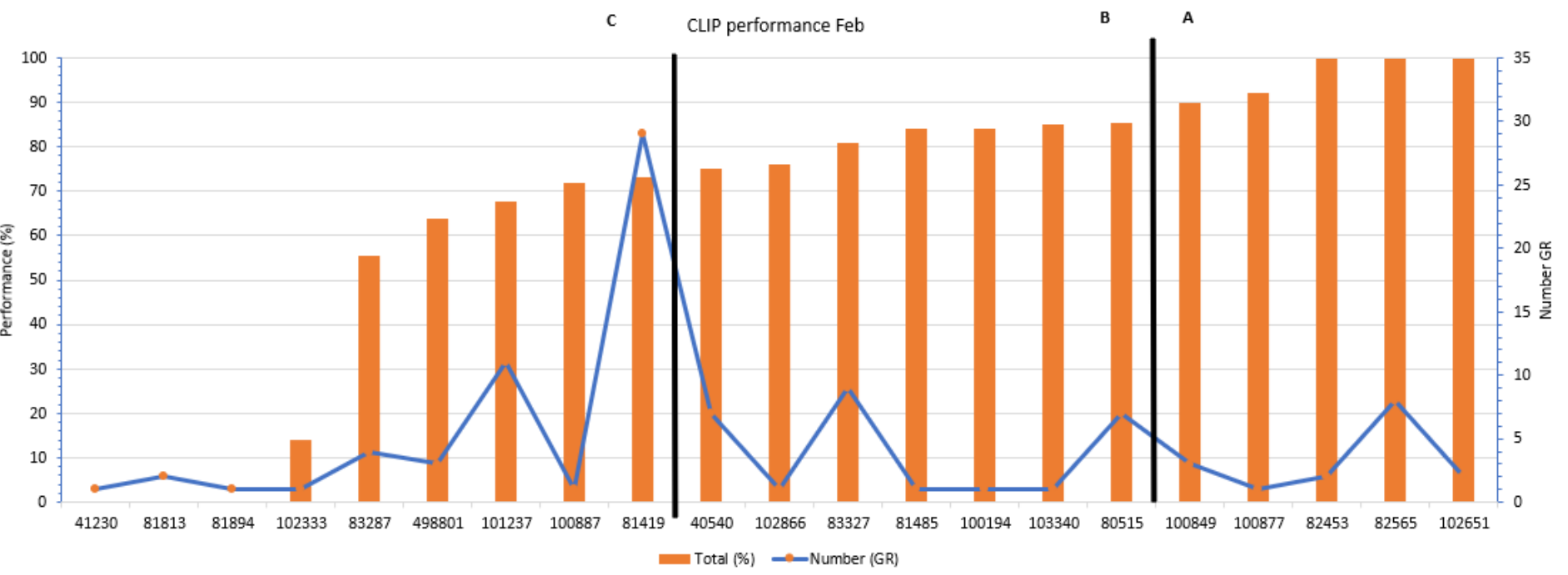
Logistical Clip Measurement

2022 cumulative total



Logistical Clip Measurement

February 2022



Supplier PPM last 3 months (Dec/Jan/Feb)



Definition PPM

PPM (Parts per million) is a measurement used by Punch Powertrain to measure quality performance.

Definition: One PPM means one defect on a million pcs or 1/1.000.000

The Punch Powertrain rate for most automotive suppliers is targeted at 25 PPM or 0,0025%.

To calculate: For example, let's say you had 25 pieces defective in a shipment of 1.000 pieces.
 $25/1000 = 0,025$ or 2,5% defective ; $0,025 \times 1.000.000 = 25.000$ PPM.

2021 PPM target ≤ 25 PPM (or contractually agreed otherwise).

Complaints are documented on delivery date of the parts.
PPM's are calculated as average of the last 3 months

Punch Powertrain

